

L-Dragon Series

Wood Log Fired Mobile Heating Platforms

“A mobile platform with independent heating capabilities”

With an internal closed water system, using one with circulation pump, expansion tank, automated air discharge valve and an optional wifi connectivity, the Log-Dragon Series are fully is a fully capable, independent heat venting system designed for a multitude of spaces and heat requirements.



Features



High Capacity Blowers:

Dragon series are equipped with two high capacity blowers with 180 degree manual rotational movement.



Complete and Compact:

Built in Expansion tanks guarantee the stability of flow and ensures safety. There is no need to connect the Dragon to any external water supply or other mechanical equipment.



Turnable Joints:

A user friendly design allows the blower heads to be turned with ease. The water pipes are placed inside this joint to prevent cluttering and ensure optimal health and safety compliance in the external structure.



Dragon Strength:

Designed to suit any working environment. A Reliable and Sturdy Construction ensures the long life of the unit.



'Plug and Play' Concept:

Dragon series are fully assembled at the factory. Simply plug, play and heat.



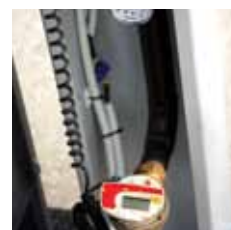
Flexibility:

Special Flex pipes are used in connection of blowers to allow easy turning of the heads.



Quality Ancillaries:

All equipments and ancillaries are in compliance with EU and international best practice standards.



Measurement is easy:

An optional Heat meter can be utilised to monitor heat and energy consumption.

Where it is ideally used

Dragon series are specifically designed mobility in focus. Dragon excels in Large areas, immediate heating required or in the places where temporary heating is desired.

- Leisure centres and swimming pools
- Factories & Industrial buildings
- Garages
- Exhibitions and conferences
- Green houses and horticulture
- Grain storage
- Marquees for Weddings and banquets
- Schools and hospitals
- Places of worship
- Emergency shelters



Technical Specifications

DRAGON SERIES WOOD FIRED BOILER TECHNICAL SPECS		Unit	BOILER TYPE			
			LOG DRAGON 20	LOG DRAGON 30	LOG DRAGON 40	LOG DRAGON 60
CAPACITY	Nominal Heat Output	kW	20	30	40	60
		kcal/h	17.200	25.800	34.400	51.600
	Minimum Heat Output	kW	6	9	12	18
		kcal/h	5.160	7.740	10.320	15.480
BLOWERS	Type	-	AAP10	AAP20		AP30
	Air Heaters Capacity	kW	2x12	2x24		2x45
		kcal/h	2x10.500	2x20.605		2x39.000
	Fan Power	W	150	150		180
	Air Heater Dimensions (WxLxH)	mm	460x535x230	555x565x300		630x550x260
Water Connections	inch	3/4"	1"			
OPERATING CONDITIONS	Safety Limit Temperature	°C	97			
	Max. Operating Temperature	°C	85-55			
	Min. Water Return Temperature	°C	55			
	Operating Pressure	bar	3			
	Boiler Test Pressure	bar	4,5			
	Electrical Connection	-	230 Vac , 50 Hz			
	Recommended Fuel Types	-	Hard Wood, 15% < Humidity < 30% *			
MAIN DIMENSIONS	W ₁ - Base Width	mm	1500	1600		
	L ₁ - Base Depth	mm	1500	1600		
	H ₁ - Boiler Height	mm	1265	1415	1515	1565
	Stack Size, ØD ₁ (Outer&Inner Diameter)	mm	130-125	150-146		
	H ₂ - Height of Stack Connection	mm	815	965	1055	1105
	W ₂ - Width	mm	1500	1800		1920
	W ₃ - Max. Width	mm	1800	2250		2360
	H ₃ - Total Height	mm	2090	2340		
	Total Water Content of Boiler	lt	100	115	125	185
	Boiler Empty Weight	kg	385	425	450	600
	Total Weight	kg	785	925	950	1100
	Filling & Drain Connections	Diameter, ØD ₂	inch	1 1/2"		
Expansion Tank Volume	lt		8		16	
SILO	Standart Fuel Storage Volume	mm	1200			
	W ₄ - Tank Width	mm	600			
	L ₂ - Tank Depth	kg	1280			