



Robus Series

Solid Fuel Boilers



Robus Series

Solid Fuel Boilers



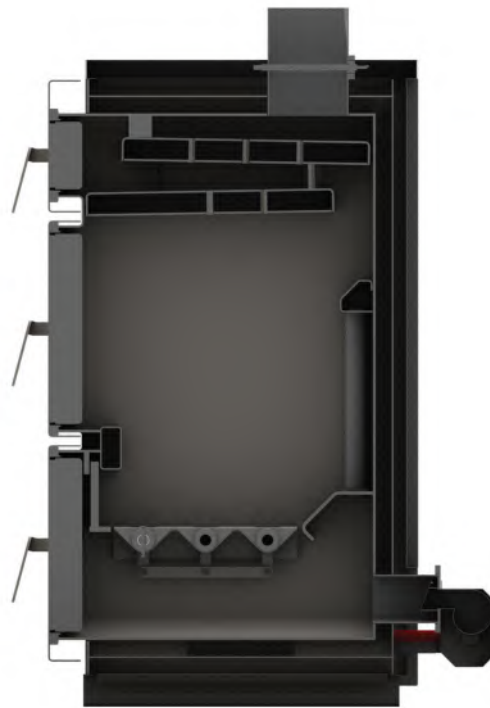
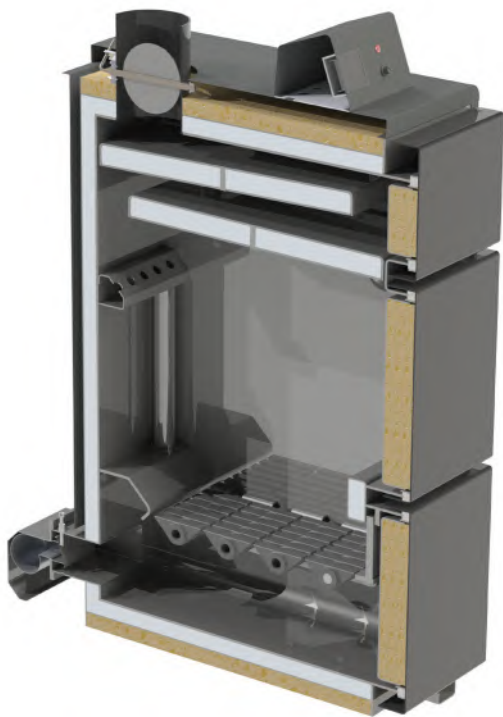
“COMFORT with ECONOMY ”

Robus series has been created for ease of use and cleaning ease on focus. These models are a good choice when solid fuels are the only alternative available or other options are not feasible.

With 3 pass baffle plate heat exchanger system inside the combustion chamber, Unlike the tubed models in the market, heavy accumulation of soot in the heat exchange area is eliminated by this system. Moreover, Cleaning has been simplified more than ever. Large loading doors allow fast reloading and ease in cleaning. With its Compact size and weight installation process is made fast and convenient.

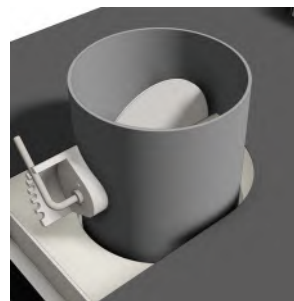
Powerful draft fan, draft regulator, rotative grills are some of the features of Robus series.

Features



Control Panel:

Advanced control panel regulates the boiler by thermostatically controlling the fan by set temperature.



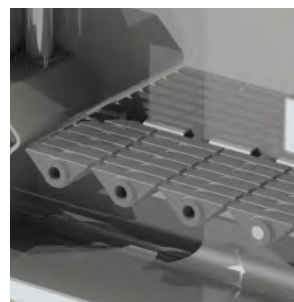
Chimney Regulator:

Strong draft could distort the combustion process therefore must be regulated. A standard feature in Robus series, the draft regulator set during commissioning by the installer eliminates this problem..



Air Fan:

High capacity air fans provides the air required by the combustion efficiently and quietly



Special Grates:

These rotative grills are rotated by an external handle allows breaking down any cinders and accumulations ossified on the grill.



Large Loading Doors:

Loading, Refueling and servicing made extremely easy thanks to the large opening doors of the Robus series.

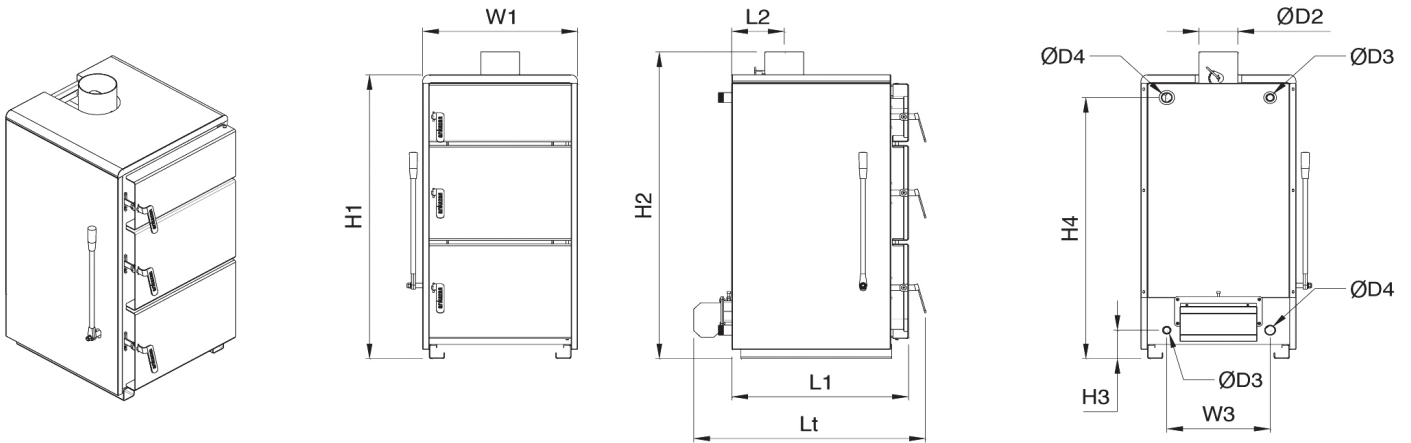


Draft Limiter:

A small lid prevents air intake when the boiler reaches to the set temperature and the fan stops. This enables the fuel to hibernate for long times and flame up when the fan starts again.

Technical Specs

	TECHNICAL SPECIFICATION OF ROBUS BOILER	UNIT	BOILER TYPE			
			Robus 25	Robus 40	Robus 60	Robus 80
OPERATING CONDITIONS	Capacity	kW	29	47	70	90
		kcal/h	25.000	40.000	60.000	80.000
	Approx. Efficiency	%	83			
	Fuel Type	-	Coal, Wood			
	Electrical Connections	-	230 Vac, 50 Hz			
	Operating	bar	2,5			
	Test Pressure	bar	4			
	Safety Limit Temperature	°C	95			
	Boiler Set Temperature Range	°C	50-80			
Min. Return Temperature	°C	40				
MAIN DIMENSIONS	Boiler Width, W ₁	mm	600			
	Boiler Depth, L ₁	mm	685	785	910	1346
	Boiler Height, H ₁	mm	1.196			
	Total Depth, Lt	mm	900	1.000	1.125	1.215
	Stack Diameter (outer), ØD ₂	mm	150		180	180
	Stack Connection Height, H ₂	mm	1.442			
	Connection Position, L ₂	mm	204			
	Empty Weight	kg	285	320	360	445
	Water Content	lt	75	85	100	112
HEATING SYSTEM CONNECTIONS	Safety Inlet&Outlet Diameter, ØD ₃	inch	3/4"		1"	1"
	Boiler Inlet&Outlet Diameter, ØD ₄	inch	1 1/4"		1 1/2"	1 1/2"
	Inlet Connections Height, H ₃	mm	120			
	Outlet Connections Height, H ₄	inch	1.250			
	Connection Axis Position	mm	400			
	Recommended Expansion Tank Volume	lt	150	200	300	400
OTHER FEATURES	Fuel Feeding Chamber Dimensions	mm	370 x 400			
	Recommended Fuel Feeding Level	mm	250			
	Silo Volume	lt	45	55	70	70
	Approx. Fuel Weight	Coal	kg	30	40	50
Wood		kg	20	25	30	30



arıkazan

Konya Yolu, 29.km Oğulbey Köyü Mevkii Gölbaşı-Ankara/Türkiye T: +90 312 615 51 11 F: +90 312 615 50 66 www.arikazan.com



50+
Years in
BUSINESS